

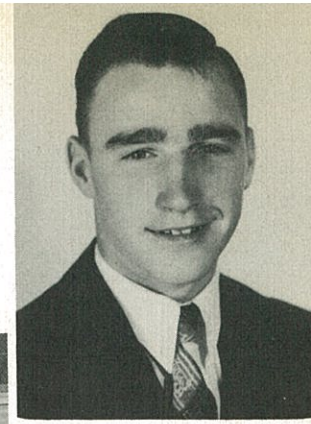
**HELEN HAHN**  
"K" Band '39, '40,  
'41, '42; Glee Club  
'41, '42; Camera Club  
'42.



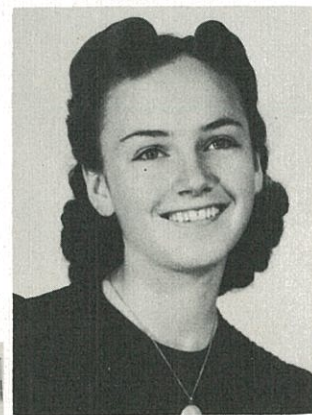
**YVONNE HORNER**  
Glee Club '42; Record  
Club '42



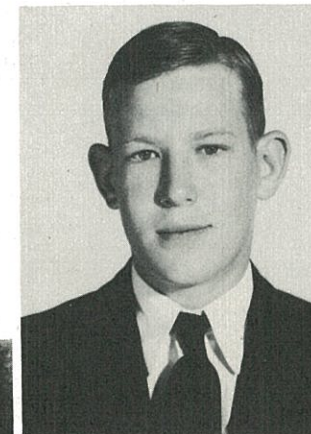
**DORIS EKAS**  
"K" Band '39, '40,  
'41, '42; Ass. Ed.  
Yellow Jacket '42;  
Business Manager  
Sandstorm '42; "K"  
Band Librarian '42.



**WELDON FUNDERBURK**  
"K" Band '39, '40,  
'41, '42; Camera  
Club '42; Football  
'41, '42; Sect. of  
Soph. Class.



**DOROTHY HAYWORTH**  
Glee Club '41, '42;  
Swing and Turn '42;  
Sr. Rep. Student  
Coun.; Pep Squad  
'41, '42; Volley  
Ball '41, '42.



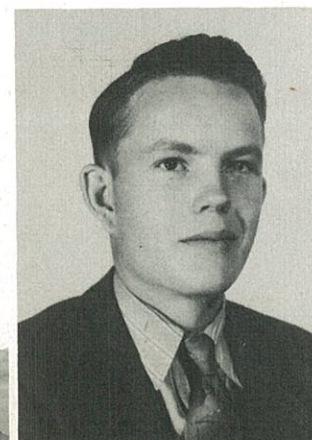
**JACK GIBSON**  
Football Manager  
'42; Basket Ball  
Manager '42; Publi-  
cation Club '42;  
Yellow Jacket Repor-  
ter '42; "K" Club.



**BETTY JEAN LOGAN**  
Pep Squad '40, '41;  
Volley Ball '42;  
Swing and Turn Club  
'42.



**DORIS LOVELACE**  
Publications Club  
'42; Ed. Yellow  
Jacket '42.



**REX HESTER**  
Pres. Student Coun-  
cil '42; Publica-  
tion Club '41, '42;  
Pres. Junior Class;  
Track '42.



**TOMMIE LOU HARWELL**  
"K" Band '39, '40,  
'41, '42; Camera  
Club '42; Glee Club  
'40, '41; '39, '40,  
'41 Scholarship.

